

**General information**  
**20<sup>th</sup> CIPAC/FAO/WHO Joint Open Meeting**  
**and 70<sup>th</sup> CIPAC Annual Meeting**

**June 10 to 18, 2026, Krabi, Thailand**

**Krabi**

Krabi is the coastal province that covers an area of 4,708 square kilometers and is located 814 km south of Bangkok. Krabi's major attractions are located largely along its extensive coastline, which contains several well-known beaches and bays, and numerous offshore tropical islands. The province had a population of 483,855 in 2024 rank of 57<sup>th</sup> out of Thailand's 76 provinces (excluding Bangkok).

**History**

From archaeological discoveries, it is believed that Krabi was one of the oldest communities in Thailand dating from the prehistoric period. It is also believed that Krabi was once the town of Ban Thai Samo, one of 12 royal cities that used a monkey as the town symbol. Krabi was a dependent town of the Nakhon Si Thammarat Kingdom. Another legend indicates that the town may have taken its name after the meaning of Krabi, which means sword. This may have stemmed from a legend that says an ancient sword was unearthed prior to the city's founding. Later, the sword became a symbol of Krabi.



**Geography**

**Krabi's** mountainous physical geography is broken by highlands and plains on the mainland; the provincial administration also covers more than 130 large and small islands in the Andaman Sea. Natural forest cover is chiefly mangrove and Cassia trees. Krabi's sandy clay soil is perfect for a variety of agricultural produce, such as rubber trees, palms, oranges, coconuts, longkong and coffee. The Krabi River flows about 5 kilometers through the town and empties into the Andaman Sea at Tambon Pak Nam.

**Attractions**

**Krabi** is famous for its scenic view and breathtaking beaches and islands. Its coral reef vistas are also, one of the world's most beautiful, which makes the city a great spot for coral diving. With attractions including hot springs, a wildlife sanctuary, sea caves, flourishing coral reefs and exotic marine life, limestone cliffs that draw rock climbing enthusiasts from around the world, and national parks that include the island paradises of Koh Phi Phi and Koh Lanta, one could easily spend weeks in Krabi and leave yearning for more. The other interesting places are:

**-Khao Khanap Nam** is regarded as the symbol of Krabi. It sits before the city and can be visited by long-tail boat from Chao Fa pier with the travelling time of about 15 minutes. From the boat, visitors can climb up a staircase to see caves with stalactites and stalagmites. A boat can be rented to visit Khao Khanap Nam, mangrove forests and the local community of Ko Klang fishing village.

**-Wat Tham Suea** or Tiger Cave, is 9 kilometers north of Krabi Town

**-Susan Hoi or Fossil Shells Beach** (Literally Seashell Graveyard) Situated at Ban Laem Pho, 17 kilometers from town, the area was once a large freshwater swamp, home to a kind of snails that lived and died **here** around 40 million years ago.

**-Ao Nang** is situated about 20 km from town; Ao Nang's white sandy beach stretches to the foot of a prominent **limestone** range.

**- Hat Rai Le**, this beach is generally divided into two sections, east and west. Although it has fewer facilities to offer than Ao Nang, West Rai Le is a broad sandy beach, offering a quiet and peaceful **ambiance**

**-Hat Tham Phra Nang**, accessible only by boat, this sweeping beach offers fine-grained white sand and crystalline waters, as well as magnificent cliffs and caves. Although visitors flock to this beach year-round, it is still extremely pristine and considered to be the most attractive one in **the** area.

**-Hat Noppharat Thara**, this is 3-kilometers-long sandy beach located 6 km from Ao Nang. The beach, paved with tiny seashells, was formerly called "Hat Khlong Haeng" by locals, which means "dried canal beach".

**-Other places**, a boat from Ao Nang Beach can be hired for sightseeing to attractions like Hong Island, Poda Island and the Phi Phi Islands.

**Ao Nang Beach** is a tourist hotspot of Krabi Province. It is part of Noppharat Thara Beach-Mu Koh Phi Phi National Park and is one of Krabi beaches that are great for sunbathing and swimming. Prominent for its nearly 2-kilometer-long beach and scenic views over the sea, with a beautiful limestone mountain on the far left of the coast, separating Ao Bang Beach and Railay Beach, and a river mouth on the far right, separating Ao Bang Beach and Noppharat Thara Beach, this place is a good combination of contrasting beauty. The largest night market in Ao Nang is called the Ao Nang Landmark Night Market, or "Nightlife Street". The Ao Nang Landmark Night Market is located opposite Nopparat Thara Beach, around 20 minutes' walk from the main Ao Nang Beach. The market is open every day, Monday to Sunday from 4:00 pm to 11:00 pm.

### **About the co-organizers**

#### **Agricultural Toxic Substances Research Group (ATSR), Department of Agriculture (DOA)**

DOA is one of the 14 governmental agencies that fall under Thailand's Ministry of Agriculture and Cooperatives (MOAC). The main headquarters for the Department of Agriculture is located in Bangkok. It is responsible for conducting research and development on crops and farm mechanization, providing quality inspection and certification services and enforcing agricultural regulations.

Agricultural Production Sciences Research and Development Division (APSRD) is an agency within the DOA. Its mission focuses on research and development related to agricultural production inputs, including soil, fertilizers, pesticides, and other chemical and biological factors.

ATSR, a unit of the APSRD, was established on April 25, 1982. Originally known as the Agricultural Toxic Substances Division. It is primarily responsible for the regulation, registration, and research on agricultural pesticides, with multi-focus to analysis of the active ingredients, evaluating efficacy as well as assessing toxicity, environmental impact, and residues in agricultural products, which includes developing natural pesticides. There are 4 main sub-groups include:

(1) Pesticide Quality System Development Sub-group, the general responsibility is enforcement agricultural pesticides by following the FAO guidelines, including analysis and monitoring under the Thai Hazardous Substances Act B.E. 2535 (1992) and related Department's Notification for quality of the pesticide products in the market.

(2) Impact of Pesticides Used Sub-group is responsible for researching, assessing, and monitoring the effects of pesticide use and pesticide contamination in soil and water.

(3) Pesticide Residue Research Sub-group. This subgroup's work is crucial for both food safety and international trade by researching and analysis pesticide residues to support the establishment of maximum residue limits (MRLs) as well as declining study for pesticide registration.

(4) Botanical Pesticides Research Sub-group, as responsible for the research of natural pesticides and friendly natural extracts to create an alternative of pesticide products for farmers used.

### **Bureau of Cosmetics and Hazardous Substances (BCHS), Department of Medical Sciences (DMSc)**

The Department of Medical Sciences (DMSc), under the Ministry of Public Health, Thailand, serves as the national reference laboratory across multiple disciplines. These include hazardous substances (e.g., pesticides and disinfectants), cosmetics, pharmaceuticals, food, medical devices, vaccine, medicinal plants, and medical laboratory diagnostics. The Department comprises six technical bureaus, two research institutes, four administrative offices, and fifteen Regional Medical Sciences Centers strategically located throughout the country.

The Bureau of Cosmetics and Hazardous Substances (BCHS) is one of the six technical bureaus based at DMSc headquarters in Nonthaburi Province. BCHS serves as the national reference laboratory for both chemical and microbiological testing of cosmetics and hazardous substances. In this context, hazardous substances refer specifically to pesticide products for household and public health use as regulated under the Hazardous Substances Act.

BCHS fulfills its technical responsibilities through three specialized sections, which are responsible for developing and maintaining quality management systems, implementing proficiency testing schemes, and evaluating the quality, safety, and efficacy of cosmetics and hazardous substances in accordance with national and international standards.

For public health pesticides, BCHS conducts analytical testing to determine the active ingredient content in formulated products used in national programs. The Bureau also contributes to national surveillance efforts in collaboration with the Thai Food and Drug Administration (Thai FDA) and provincial public health offices. BCHS works with relevant authorities to monitor product quality in support of consumer protection and public health interventions, including disease prevention and control.

Additionally, BCHS provides quality-control testing services for pesticide products including insecticide-treated mosquito nets—for both public and private agencies.

## **Thai Agricultural Innovation Trade Association (TAITA)**

TAITA, an affiliate of CropLife Thailand, is a leading association dedicated to advancing safe, sustainable, and innovative crop protection solutions. We champion science-based research and responsible practices that safeguard human health, protect crops, and preserve the environment, while strengthening Thailand's agricultural competitiveness on the global stage. Through close collaboration with government agencies, academic institutions, producers, importers, and dealers of modern crop protection technologies, TAITA empowers farmers to boost productivity and create long-term, sustainable value for Thailand's agricultural sector.

## **How to reach Aonang Villa Resort**

### **Step 1: Fly to Krabi International Airport (KBV)**

#### **Bangkok:**

Numerous daily direct flights are available from both Don Mueang International Airport (DMK) and Suvarnabhumi Airport (BKK), taking about 1.5 hours.

- Airlines from Don Mueang International Airport (DMK) like Thai AirAsia, Thai Lion Air and Nok Air serving this route.
- Airlines from Suvarnabhumi Airport (BKK) like Bangkok Airways, Thai Airways, Thai AirAsia and Thai Vietjet Air serving this route.

#### **International:**

There are also direct international flights from hubs like Kuala Lumpur and Singapore.

- Airlines from Kuala Lumpur Airport like AirAsia and Firefly serving this route.
- Airlines from Singapore Changi Airport like Scoot, AirAsia, Singapore Airlines and Malaysia Airlines serving this route.

### **Step 2: Transfer from Krabi International Airport (KBV) to Aonang Villa Resort**

#### **By Shuttle Bus or Van**

How to: Look for the official airport shuttle bus or van service, which has a designated bus stop outside the Arrivals Hall at the airport.

Cost: Approximately ฿100 – ฿200.

Time: Around 90 minutes.

Pros: A very affordable and direct option.



#### **By Taxi**

How to: Find the official taxi rank outside the Arrivals Hall at the airport.

Cost: Expect to pay ฿600 - ฿1000.

Time: The fastest option, taking about 50 minutes.

Pros: Convenient, fast, and directly to your accommodation.



### **By Ride-Hailing App (e.g., Grab)**

How to: Download and use the Grab app to book a private car, specifying your pick-up location at the airport and exact drop-off in Ao Nang.

Cost: Varies depending on the car size and current rates.

Time: Similar to a taxi, about 50 minutes.

Pros: Allows you to pre-book and choose car size for convenience.

### **Visa requirements**

Nationals of the following 93 countries and territories are entitled to visa exemption for the purpose of tourism business engagements or urgent work or ad-hoc work, for up to 60 days period of stay and can be extended for another period not exceeding 30 days. Extension of stay is solely at the discretion of the immigration officer. Before the maximum stay of 90 days are eligible to apply for a new type of visa in Thailand. The list of countries and territories whose Nationals of the following 93 countries, please visit

<https://thaiconsulatela.thaiembassy.org/en/publicservice/visa-exemption-and-visa-on-arrival-to-thailand>

### **Visa information**

Starting from May 1, 2025, the Immigration Bureau of Thailand requires all foreign nationals entering or departing the Kingdom of Thailand to fill out their personal and travel information in a digital system called the Thailand Digital Arrival Card (TDAC). Further details can be found at the link provided <https://tdac.immigration.go.th/arrival-card/#/home>

### **Registration Procedure**

-Registration for both the symposium (including the Gala dinner) and the excursion will be via the website (**[www.cipacmeeting2026.com](http://www.cipacmeeting2026.com)**). The online registration form will be enabled for submissions starting December 15<sup>th</sup>, 2025.

-The cost for the **symposium** (including the Gala dinner) is **\$200**. There is no extra charge for spouse. The cost for the **excursion** is **\$70**.

-Payment is bank transfer on completion of the form you will be redirected to a bank for payment.

-The Symposium hosts and Symposium speakers are **exempted** from the Symposium costs. Anyone wishing to give a presentation should contact Sukanya, Elen or László. (Sukanya Khomkong, [thai\\_sukanya@yahoo.com](mailto:thai_sukanya@yahoo.com); E.Karassali [bpi.gr](mailto:bpi.gr); bura.laszlo.id@gmail.com).

-Registration and payment must be made in advance. The registering for this meeting and relevant details will be incorporated into a delegate list and may be made available (if necessary) to parties directly related to the meeting including, but not limited to; venues, accommodation providers. However, to ensure your privacy, your email address and personal information will not be shared outside of CIPAC Meeting 2026 Secretariat.

### **Hotel**

The meeting is being held in **Aonang Villa Resort**, Krabi with the perfect location at the southern end of magnificent Ao Nang Beach. The resort offers a perfect blend of comfort and natural beauty. Surrounded by dramatic limestone cliffs and turquoise waters, the resort provides an atmosphere of pure tranquility, enhanced by gentle ocean breezes and spectacular coastal views. Conveniently located, the resort is just 26 kilometers (16 miles) by road from Krabi International Airport (KBV) and easy walk 5-minute steps away from lively local shops, restaurants, and the vibrant charm of Ao Nang. Guests can enjoy personalized Thai hospitality with excellent facilities including two beachfront swimming pools, a full-service spa, and a modern fitness center.

Rooms are reserved online through the [sales@aonangvilla.com](mailto:sales@aonangvilla.com) until March 31<sup>st</sup>. After which any remaining rooms will be released to the public. The special rate is provided exclusively for the CIPAC Meeting:

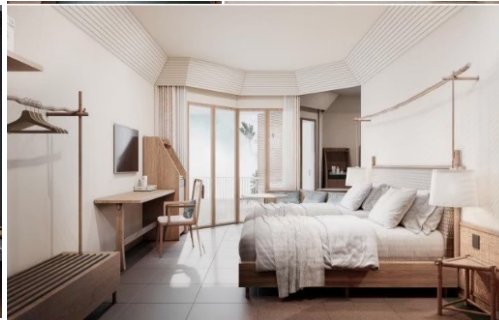
**Grand Superior Room**

- \$95 per night (net) with breakfast
- Available in 1 King Bed or 2 Twin Beds (subject to availability)

**Premier Sea View Room**

- \$160 per night (net) with breakfast
- Available in 1 King Bed or 2 Twin Beds (subject to availability)

**Remark:** When booking rooms quote CIPAC2026



**Excursion**

**Sunday June 14<sup>th</sup> – Hong Island**

**Hong Island** Program, begin your journey toward Ko Hong and Ko Hong Lagoon are a part of Than Bok Khorani National Park. Just 6 km from the mainland, the Hong Islands are easily accessible around 60 minutes private catamaran cruise from Ao Nang Town. The island's feature is a limestone mountain. In front of the island is a curved sandy beach that looks like a flying bird with fine white sand and emerald green water, which is very beautiful and clear. At one end of the beach, there is a walkway with 419 iron stairs and from the top of the mountain, there is a 360-degree panorama. The excursion includes Pak Bia Island (Koh Pak Bia) is a small, picturesque island located in the Andaman Sea, just off the coast of Krabi. It is part of the Mu Koh Hong group of limestone islands. This program offers activities like snorkeling, swimming, paddle boarding, kayaking, hiking, sightseeing, sunbathe and also local lunch served on the island.







### **The weather**

The weather in Krabi, the average temperature in June starts off at 28.5°C (created by highs of 31°C and lows of 26°C) and slowly falls down to 28°C (highs of 31°C and lows of 25°C) by the end of the month. The tropical weather characterized by warm temperatures, significant rainfall, ample sunshine, and high humidity. The climate offers a unique experience for outdoor exploration, although it's advisable to plan around potential rain showers.